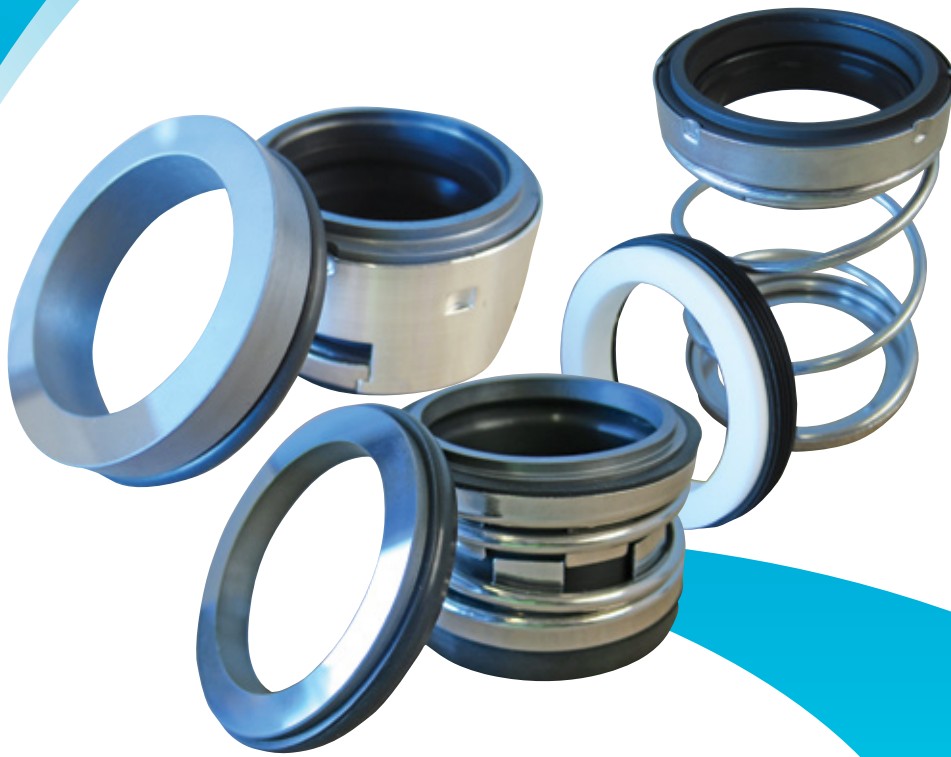


Aquaplus

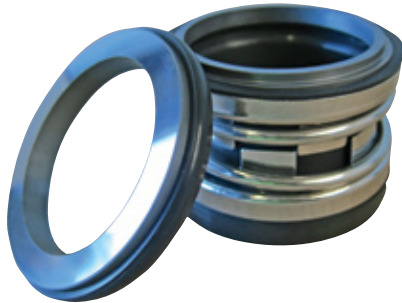
Series MS
Mechanical Seals
Single Spring Seals



MECHANICAL SEALS

MS2100 Range

The Aquaplus MS2100 is a compact, single spring, elastomer bellows mechanical seal. This seal type has a positive drive via drive bands which protects the bellows from torsional strain. Standards met are DIN24960, ISO3069, ANSIB73.1 M-1991.



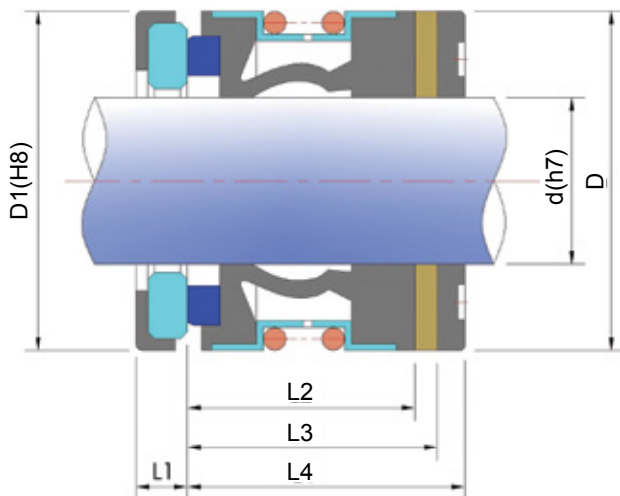
Applications

- Major use: Oil, Water, light non-dangerous chemicals in such industries as Wastewater treatment, Mining, Mineral processing, Pulp & Paper, Food processing, Marine and any other general application.

Operating Limitations

- Temperature: -40°C to +150°C
- Pressure in seal chamber: Up to 20 Bar
- Linear velocity: Up to 15 M/Sec.

Technical Data



Seal Type	d	D	D1	L1	L2	L3	L4
MS2100-10	10	20	21	5.0	15.2	27.7	35.2
MS2100-12	12	22	23	6.0	15.2	26.7	34.2
MS2100-14	14	24	25	6.0	15.2	29.2	34.2
MS2100-15	15	25	26	6.0	15.2	29.2	34.2
MS2100-16	16	26	27	6.0	15.2	29.2	34.2
MS2100-18	18	32	33	6.0	20.2	31.7	39.2
MS2100-20	20	34	35	6.0	20.2	31.7	39.2
MS2100-22	22	36	37	6.0	20.2	31.7	39.2
MS2100-24	24	38	38	6.0	20.2	34.2	44.2
MS2100-25	25	39	40	6.0	20.2	34.2	44.2
MS2100-28	28	42	43	6.0	26.2	36.7	44.2
MS2100-30	30	44	45	7.0	26.2	35.7	43.2
MS2100-32	32	46	48	7.0	26.2	35.7	48.2
MS2100-33	33	47	48	7.0	26.2	35.7	48.2
MS2100-35	35	49	50	8.0	26.2	34.7	47.2
MS2100-38	38	54	56	8.0	30.2	37.2	47.2
MS2100-40	40	56	58	8.0	30.2	37.2	47.2
MS2100-43	43	59	61	8.0	30.2	37.2	52.2
MS2100-45	45	61	63	8.0	30.2	37.2	52.2
MS2100-48	48	64	66	10.0	30.2	35.2	50.2
MS2100-50	50	66	70	10.0	30.2	37.7	50.2
MS2100-53	53	69	73	10.0	30.2	37.7	60.2
MS2100-55	55	71	75	10.0	30.2	37.7	60.2
MS2100-58	58	78	78	10.0	33.2	42.7	60.2
MS2100-60	60	80	80	12.0	33.2	40.7	58.2
MS2100-63	63	83	83	12.0	33.2	40.7	58.2
MS2100-65	65	85	85	12.0	33.2	40.7	68.2
MS2100-68	68	88	90	12.0	33.2	40.7	68.2
MS2100-70	70	90	92	12.0	33.2	48.2	68.2
MS2100-75	75	99	97	12.0	40.2	48.2	68.2
MS2100-80	80	104	105	14.0	40.2	47.7	77.7
MS2100-85	85	109	110	14.0	40.2	47.7	77.7
MS2100-90	90	114	115	14.0	40.2	52.7	77.7
MS2100-95	95	119	120	14.0	40.2	52.7	77.7
MS2100-100	100	124	125	14.0	40.2	52.7	77.7

MS20 Range

The Aquaplus MS20 are compact, single spring, elastomer bellows mechanical seal. This seal type has a positive drive. Standards met are imperial dimensions.



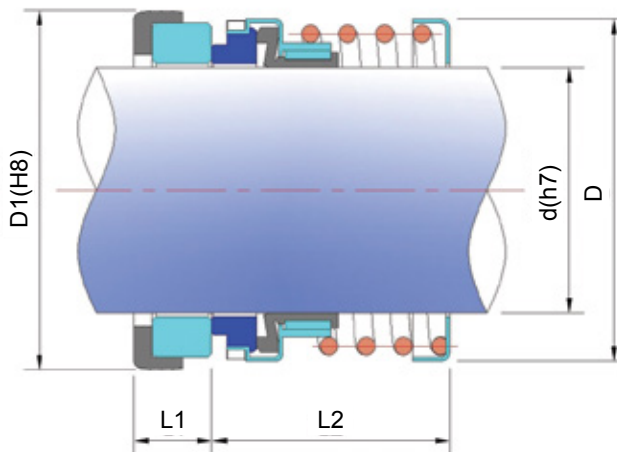
Applications

- Major use: Oil, Water, in such industries as Wastewater treatment, Mining, Mineral processing, Food processing and any other general application.

Operating Limitations

- Temperature: -20°C to +180°C
- Pressure in seal chamber: Up to 10 Bar
- Linear velocity: Up to 12 M/Sec.

Technical Data



Seal Type	d	D	D1	L1	L2
MS20-0.375	9.525	23.0	24.60	9.0	25.00
MS20-0.500	12.700	24.0	27.79	9.0	25.00
MS20-0.625	15.875	27.0	30.95	10.6	25.00
MS20-0.750	19.050	31.5	34.15	10.6	25.00
MS20-0.875	22.255	33.5	37.30	10.6	25.00
MS20-1.000	25.400	43.5	40.50	10.6	25.00
MS20-1.125	28.575	46.5	47.63	12.0	33.50
MS20-1.250	31.750	49.5	50.80	12.0	33.50
MS20-1.375	34.925	52.8	53.98	12.0	33.50
MS20-1.500	38.100	56.0	57.15	12.0	33.50
MS20-1.625	41.275	62.5	60.35	12.0	33.50
MS20-1.750	44.450	66.3	63.50	12.0	40.50
MS20-1.875	47.625	66.9	66.7	12.0	40.50
MS20-2.000	50.800	73.3	69.85	12.0	40.50
MS20-2.125	53.975	73.5	73.05	13.6	41.00
MS20-2.250	57.150	78.5	76.20	13.6	41.00
MS20-2.375	60.325	82.3	79.40	13.6	41.00
MS20-2.500	63.500	85.0	82.55	13.6	41.00
MS20-2.625	66.675	88.5	92.10	16.0	49.00
MS20-2.750	69.850	92.8	95.25	16.0	49.00
MS20-2.875	73.025	95.0	98.45	16.0	49.00
MS20-3.000	76.200	102.0	101.65	16.0	49.00

MS21 Range

The Aquaplus MS21 is a compact, single spring, elastomer bellows mechanical seal. This seal type has a positive drive. Standards met are imperial dimensions.



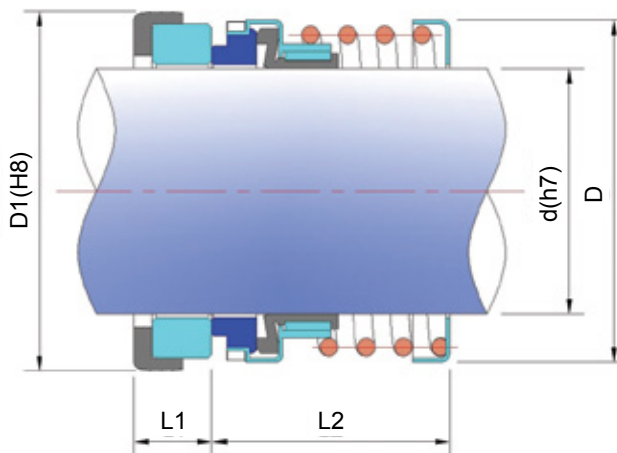
Applications

- Major use: Oil, Water, in such industries as Waste-water treatment, Mining, Mineral processing, Food processing and any other general application.

Operating Limitations

- Temperature: -20°C to +180°C
- Pressure in seal chamber: Up to 10 Bar
- Linear velocity: Up to 12 M/Sec.

Technical Data



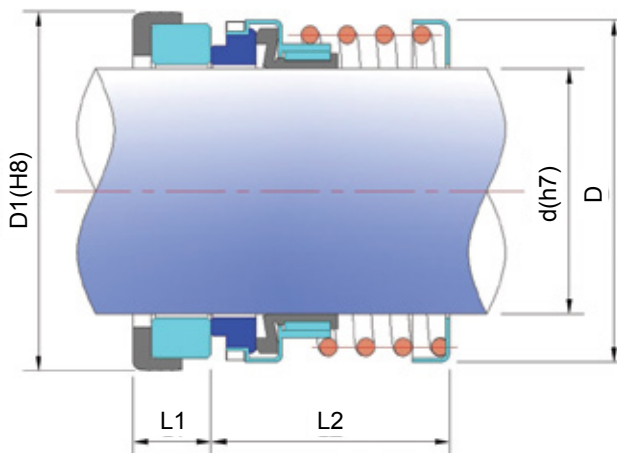
Seal Type	d	D	D1	L1	L2
MS21-0.500	12.700	23.88	25.40	7.92	20.82
MS21-0.625	15.875	26.70	31.75	10.29	22.43
MS21-0.750	19.050	31.09	34.93	10.29	11.43
MS21-0.875	22.255	33.40	38.10	10.29	24.00
MS21-1.000	25.400	43.18	41.28	11.10	25.60
MS21-1.125	28.575	46.28	44.45	11.10	27.17
MS21-1.250	31.750	49.40	47.63	11.10	27.17
MS21-1.375	34.925	52.58	50.80	11.10	28.78
MS21-1.500	38.100	55.80	53.98	11.10	28.78
MS21-1.625	41.275	62.20	60.33	12.70	35.13
MS21-1.750	44.450	66.00	63.50	12.70	35.13
MS21-1.875	47.625	66.60	66.68	12.70	38.30
MS21-2.000	50.800	73.00	69.85	12.70	38.30
MS21-2.125	53.975	73.30	76.20	14.27	43.05
MS21-2.250	57.150	78.41	79.38	14.27	43.05
MS21-2.375	60.325	82.00	82.55	14.27	46.25
MS21-2.500	63.500	84.87	85.73	14.27	46.25
MS21-2.625	66.675	88.40	85.73	15.90	49.40
MS21-2.750	69.850	92.58	88.90	15.90	49.40
MS21-2.875	73.025	94.85	95.25	15.90	52.57
MS21-3.000	76.200	101.90	98.43	15.90	52.57

MS24 Range

The Aquaplus MS24 are compact, single spring, elastomer bellows mechanical seal. This seal type has a positive drive. Standards met are DIN24960.



Technical Data



Applications

- Major use: Oil, Water, in such industries as Waste-water treatment, Mining, Mineral processing, Food processing and any other general application.

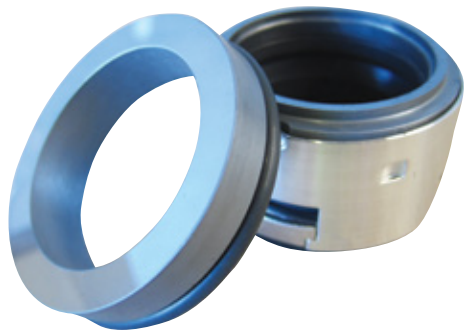
Operating Limitations

- Temperature: -20°C to +180°C
- Pressure in seal chamber: Up to 10 Bar
- Linear velocity: Up to 12 M/Sec.

Seal Type	d	D	D1	L1	L2
MS24-12	12	22.0	23	8.6	23.90
MS24-14	14	24.0	25	8.6	26.40
MS24-16	16	27.0	27	8.6	26.40
MS24-18	18	30.5	33	10.0	27.50
MS24-20	20	33.5	35	10.0	27.50
MS24-22	22	33.5	37	10.0	27.50
MS24-24	24	38.3	39	10.0	30.00
MS24-25	25	39.5	40	10.0	30.00
MS24-28	28	42.3	43	10.0	32.50
MS24-30	30	44.0	45	10.0	32.50
MS24-32	32	46.0	48	10.0	32.50
MS24-33	33	46.0	48	10.0	32.50
MS24-35	35	49.3	50	10.0	32.50
MS24-38	38	53.0	56	11.0	34.00
MS24-40	40	56.0	58	11.0	34.00
MS24-43	43	59.0	61	11.0	34.00
MS24-45	45	61.3	63	11.0	34.00
MS24-48	48	64.3	66	11.0	34.00
MS24-50	50	66.3	70	13.0	34.50
MS24-53	53	70.7	73	13.0	34.50
MS24-55	55	72.0	75	13.0	34.50
MS24-58	58	78.5	78	13.0	39.50
MS24-60	60	78.5	80	13.0	39.50
MS24-63	63	81.8	83	13.0	39.50
MS24-65	65	84.5	85	13.0	39.50
MS24-68	68	90.0	90	15.3	37.20
MS24-70	70	90.0	92	15.3	37.20
MS24-75	75	97.0	97	15.3	44.70

MS 502 Range

The Aquaplus MS502 is a compact, single spring, elastomer bellows mechanical seal. This seal type incorporates a positive drive and is self-aligning to compensate for excessive shaft end play and run-out. With a non-clogging design will not be affected by build-up of solids. Standards met are DIN24960, ISO3069.



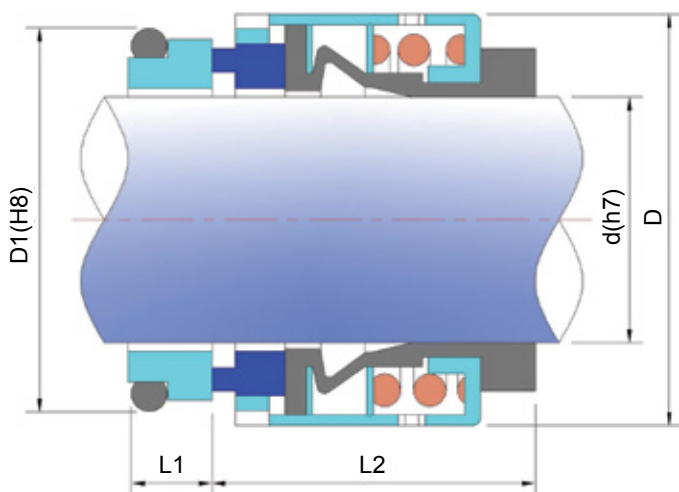
Applications

- Major use: Oil, Water, light non-dangerous chemicals, light acids, Paint & inks in such industries as Wastewater treatment, Mining, Mineral processing, Pulp & Paper, Food processing, Marine, Offshore, Petrochemical, Pharmaceutical, Power generation, Paint & Ink.

Operating Limitations

- Temperature: -40°C to +205°C
- Pressure in seal chamber: Up to 40 Bar
- Linear velocity: Up to 13 M/Sec.

Technical Data



Seal Type	d	D	D1	L1	L2
MS502-14	14	24	25	12	23
MS502-16	16	26	27	12	23
MS502-18	18	32	33	13.5	24
MS502-20	20	34	35	13.5	24
MS502-22	22	36	37	13.5	24
MS502-24	24	38	39	13.5	26.7
MS502-25	25	39	40	13	27
MS502-28	28	42	43	12.5	30
MS502-30	30	44	45	12	30.5
MS502-32	32	46	48	12	30.5
MS502-33	33	47	48	12	30.5
MS502-35	35	49	50	12	30.5
MS502-38	38	54	56	13	32
MS502-40	40	56	58	13	32
MS502-43	43	59	61	13	32
MS502-45	45	61	63	13	32
MS502-48	48	64	66	13	32
MS502-50	50	66	70	13.5	34
MS502-53	53	69	73	13.5	34
MS502-55	55	71	75	13.5	34
MS502-58	58	78	78	13.5	39
MS502-60	60	80	80	13.5	39
MS502-63	63	83	83	13.5	39
MS502-65	65	85	85	13.5	39
MS502-68	68	88	90	13.5	39
MS502-70	70	89	92	14.5	45.5
MS502-75	75	96	97	14.5	45.5
MS502-80	80	104	105	15	45
MS502-85	85	108	110	15	45
MS502-90	90	114	115	15	50
MS502-95	95	118	120	15	50
MS502-100	100	124	125	15	50

Aquaplus Product Range

ESD Series – End Suction DIN (24255) Pumps

ESI Series – End Suction ISO (2858) Pumps

SP Series – Self Priming Pumps

SD Series – Submersible Dewatering Pumps

AD Series – Air Diaphragm Pumps

FRM Series – Flexible Rising Main (Borehole Pump Hose)

MS Series – Mechanical Seals (Single Spring & Cartridge)

PC Series – Progressive Cavity Pumps

HP Series – Peristaltic Pumps

MD Series – Magnetic Drive Pumps

IS Series – Split Case Pumps

The logo for Aquaplus, featuring the word "Aquaplus" in a stylized, blue, italicized font with a white outline. A blue wave-like graphic element is positioned above the letter 'a'.

EXCLUSIVELY DISTRIBUTED BY

The logo for Malcolm Thompson Pumps, featuring a blue wave-like graphic element above the text "MALCOLM THOMPSON PUMPS". "MALCOLM THOMPSON" is in a smaller, blue, sans-serif font, and "PUMPS" is in a larger, bold, blue, sans-serif font.

1800 733 687

www.mtp.com.au | mtp@mtp.com.au

For information on these products or for any specialised requirements please contact your local Aquaplus distributor or visit our website at www.aquapluspumps.com.au